

Osprey Digital RealTime System



The Osprey Digital RealTime System consists of Osprey digital cameras and Cortex software. It is available in either a six or eight camera system. An eight camera system will allow you to capture in an area approximately 10 feet by 10 feet by 8 feet with sub-millimeter accuracy.



The Osprey Digital Cameras provide today's motion capture technicians with a tool that assures reliable and accurate data. With digital technology there is no degradation of the signal over distance, less noise, and no resampling of data on another piece of electronics. The Osprey Digital Camera signal goes directly to the tracking computer via an Ethernet connection. The signal processing is embedded in the camera. This streamlined system of motion capture from camera to computer means less hardware and easier maintenance. The FPGA (field programmable field array) built into the Osprey is software and firmware upgradeable via the Internet - no moving of the cameras is necessary.

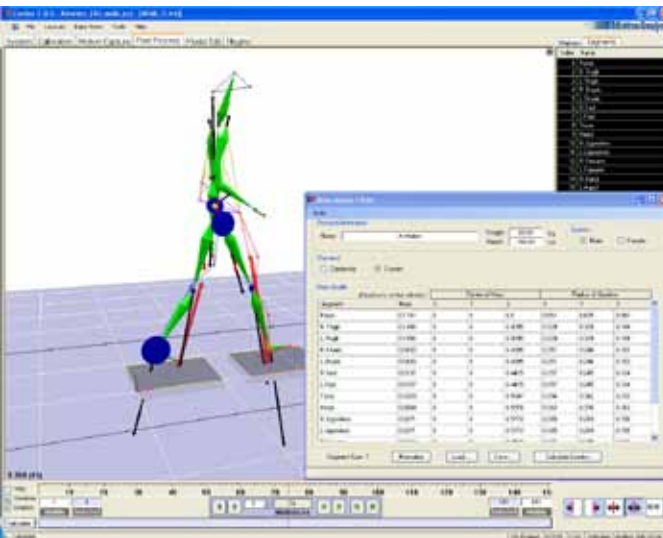
Motion Analysis announces a small format solution for those who want the technical superiority of a passive optical motion capture system at an economical price: *the Osprey Digital RealTime System.*

Osprey Digital Camera

The Osprey is a small, compact camera capable of 245 fps with a sensor size of 640 x 480 pixels (.3 million) offers the motion capture technician the benefit of all-digital technology at an economical price for smaller environments.

Osprey Includes

- Osprey cameras
- Camera carrying case
- Power hub
- Gigabit Switch
- Marker kit
- Calibration frame and wand set
- Cortex software



Motion Analysis Corporation
3617 Westwind Boulevard
Santa Rosa, CA USA 95403

(T) 707.579.6500
www.motionanalysis.com
info@motionanalysis.com

